

**BUILDING "B"**  
 BUILDING REHAB  
 3 STORIES  
 608 SF / FLR (1824 SF GROSS)

**BUILDING "A"**  
 TOWN HOUSES (8)  
 2 STORY W/ BASEMENT  
 (2,800 SF UNITS)

**BUILDING "C"**  
 FLATS (10)  
 4 STORY  
 10,485 SF / FLR  
 (41,940 SF GROSS)

**BUILDING "F"**  
 TOWN HOUSES (4)  
 2 STORY  
 (3,000 SF UNITS)

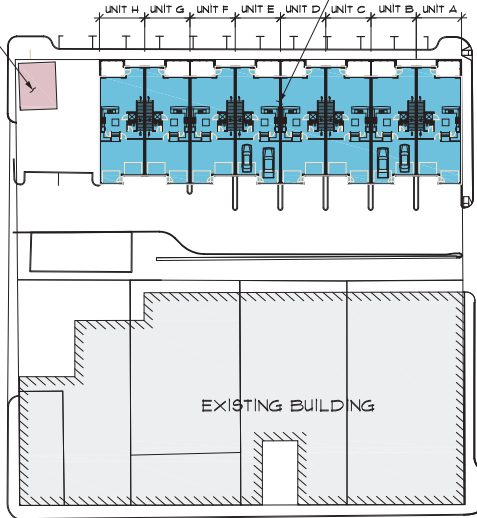
FRONT STREET

UNIT D UNIT C UNIT B UNIT A

LAFAYETTE STREET

JEFFERSON STREET

MARKET STREET



MAIN STREET

**BUILDING "D"**  
 TOWN HOUSES (3)  
 2 STORY W/ BASEMENT  
 1,600 SF UNITS

MAIN STREET

**BUILDING "E"**  
 COMMERCIAL SPACE  
 FIRST FLR 4,825 SF  
 SECOND FLR 4,825 SF



**SITE PLAN**  
 Scale: 1" = 30'-0"

GROSS PROJECT FINISHED AREA	
RESIDENTIAL	64,674 SF
COMMERCIAL	8,580 SF
<b>TOTAL</b>	<b>73,254 SF</b>

PRELIMINARY PROJECT DATA RESIDENTIAL UNITS	
NUMBER OF UNITS	NUMBER OF UNITS
BUILDING "A"	8 TOWNHOUSES
BUILDING "C"	10 FLATS
BUILDING "D"	3 TOWNHOUSES
BUILDING "F"	4 TOWNHOUSES
<b>TOTAL NUMBER OF UNITS</b>	<b>25 UNITS</b>

PRELIMINARY PROJECT DATA COMERCIAL UNITS	
NUMBER OF UNITS	NUMBER OF UNITS
BUILDING "B"	1 UNIT
BUILDING "E"	2 UNITS
<b>TOTAL NUMBER OF UNITS</b>	<b>3 UNITS</b>

PRELIMINARY  
FOR INFORMATION ONLY

Robert A. Hall, AIA 0051917  
 Robert A. Smith, AIA 0016812, P.C. 0052033



Proposed Mixed Use Development  
**FRONT STREET DEVELOPMENT LLC**  
 Downtown Washington, Missouri, 63050

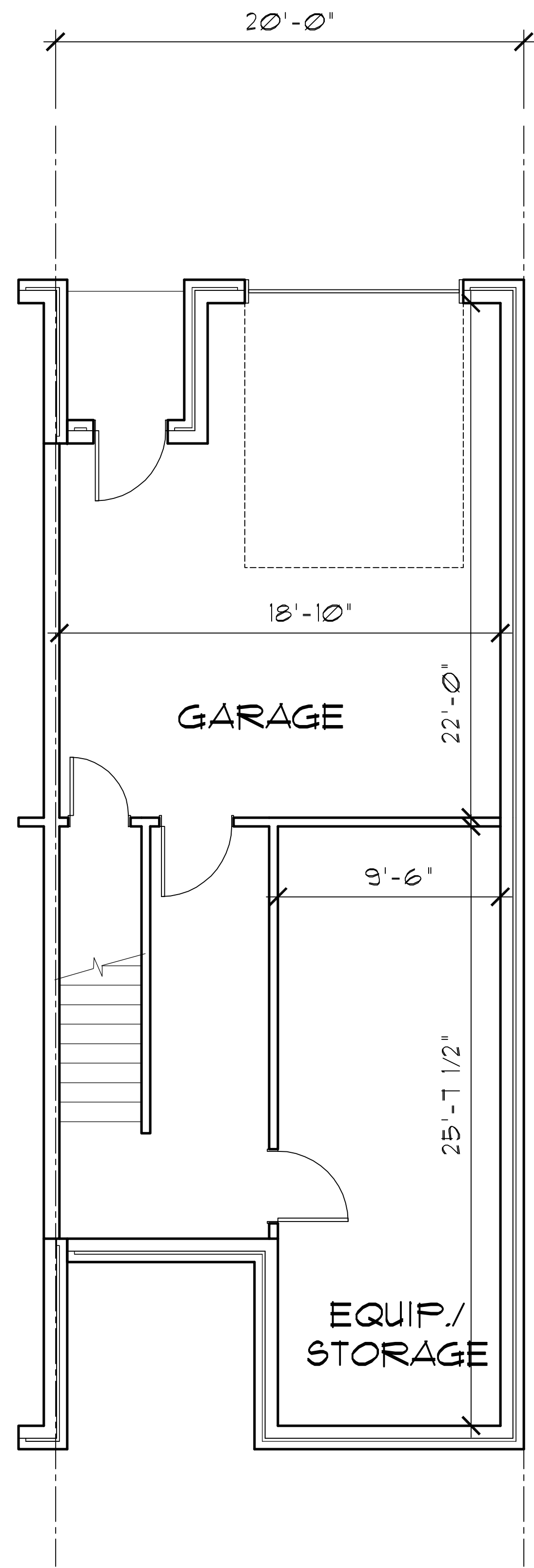
REVISIONS
PROJECT NO.
ISSUE DATE
PRELIMINARY
SHEET NO.



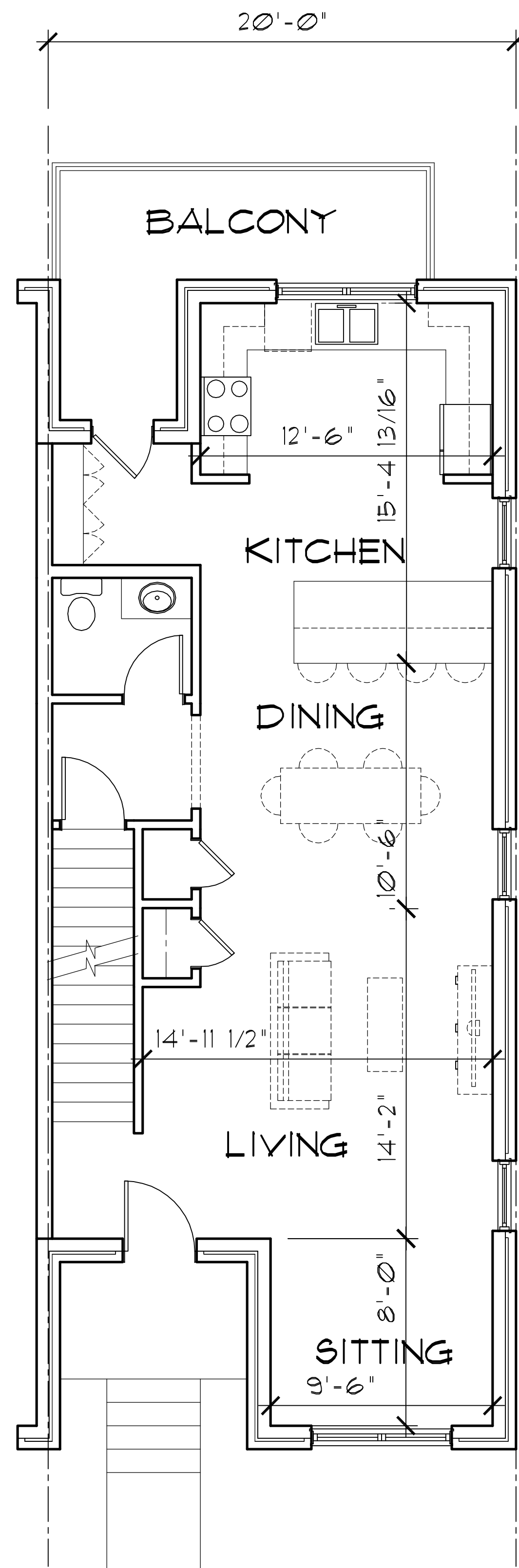
SOUTH ELEVATION



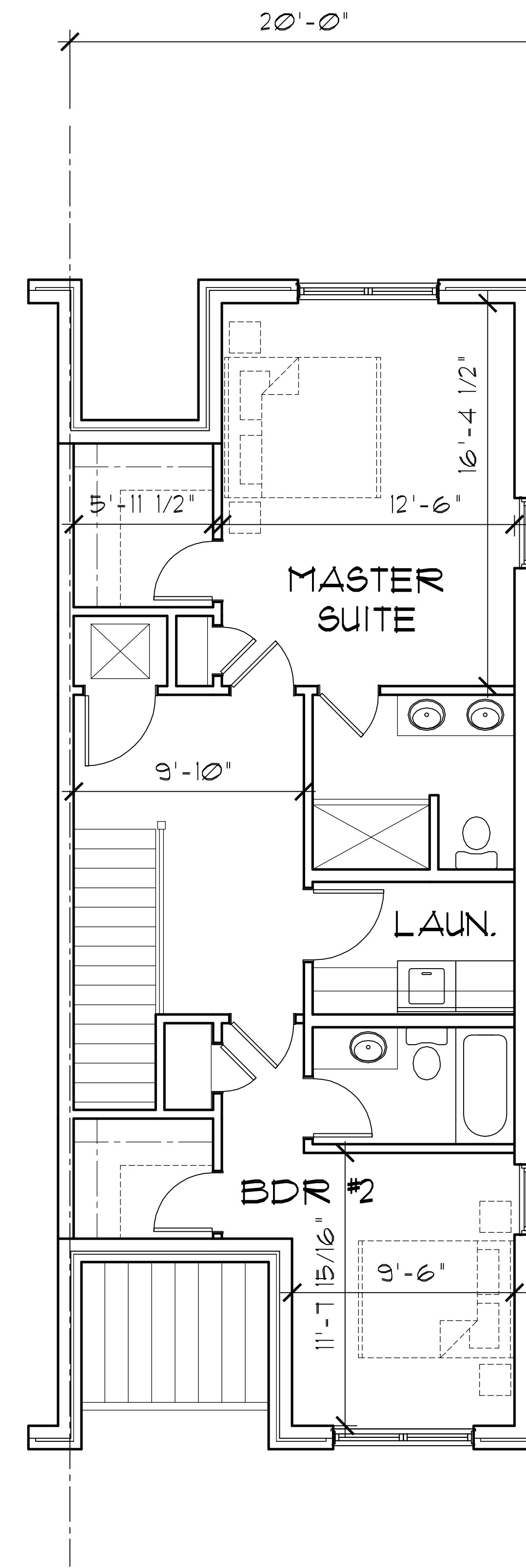
EAST ELEVATION



SCHEME "A"  
 BASEMENT FLOOR PLAN 110 SF  
 Scale: 1/4" = 1'-0"



SCHEME "A"  
 FIRST FLOOR PLAN 800 SF  
 Scale: 1/4" = 1'-0"

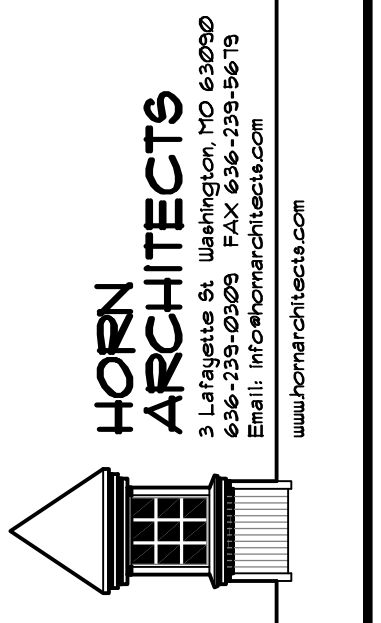


SCHEME "A"  
 SECOND FLOOR PLAN 800 SF  
 Scale: 1/4" = 1'-0"

BUILDING "D"

PRELIMINARY  
 NOT FOR CONSTRUCTION

Kenneth R. Scheer #A-2007028208  
 H&S Architects, LLC #2013042889



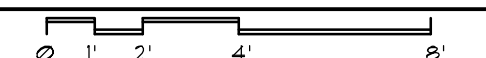
New Three Unit Townhome for:  
**FRONT STREET DEVELOPMENT LLC**  
 Washington Missouri, 63090

SHEET TITLE	.
REVISIONS	
PROJECT NO.	..
ISSUE DATE	PRELIMINARY
SHEET NO.	.



SCHEME 'A'  
FIRST FLOOR PLAN

Scale: 1/4" = 1'-0"



BUILDING ' D '	
FIRST FLOOR AREA	800 SF ( MIN )
SECOND FLOOR AREA	800 SF ( MIN )
GROSS LIVING AREA	1,600 SF
BASEMENT AREA	800 SF
NUMBER OF BEDROOMS	2
NUMBER OF BATHS	2 1/2

**BUILDING "D"**

PRELIMINARY  
NOT FOR CONSTRUCTION

Kenneth R. Scheer #A-2007028208  
HS2 Architects, LLC #2013042889



HORN  
ARCHITECTS  
3 Lafayette St., Washington, MO 63090  
Phone: 636-336-5615  
Email: info@hornarchitects.com  
www.hornarchitects.com

New Three Unit Townhome for:  
**FRONT STREET DEVELOPMENT LLC**  
Washington Missouri, 63090

SHEET TITLE

REVISIONS

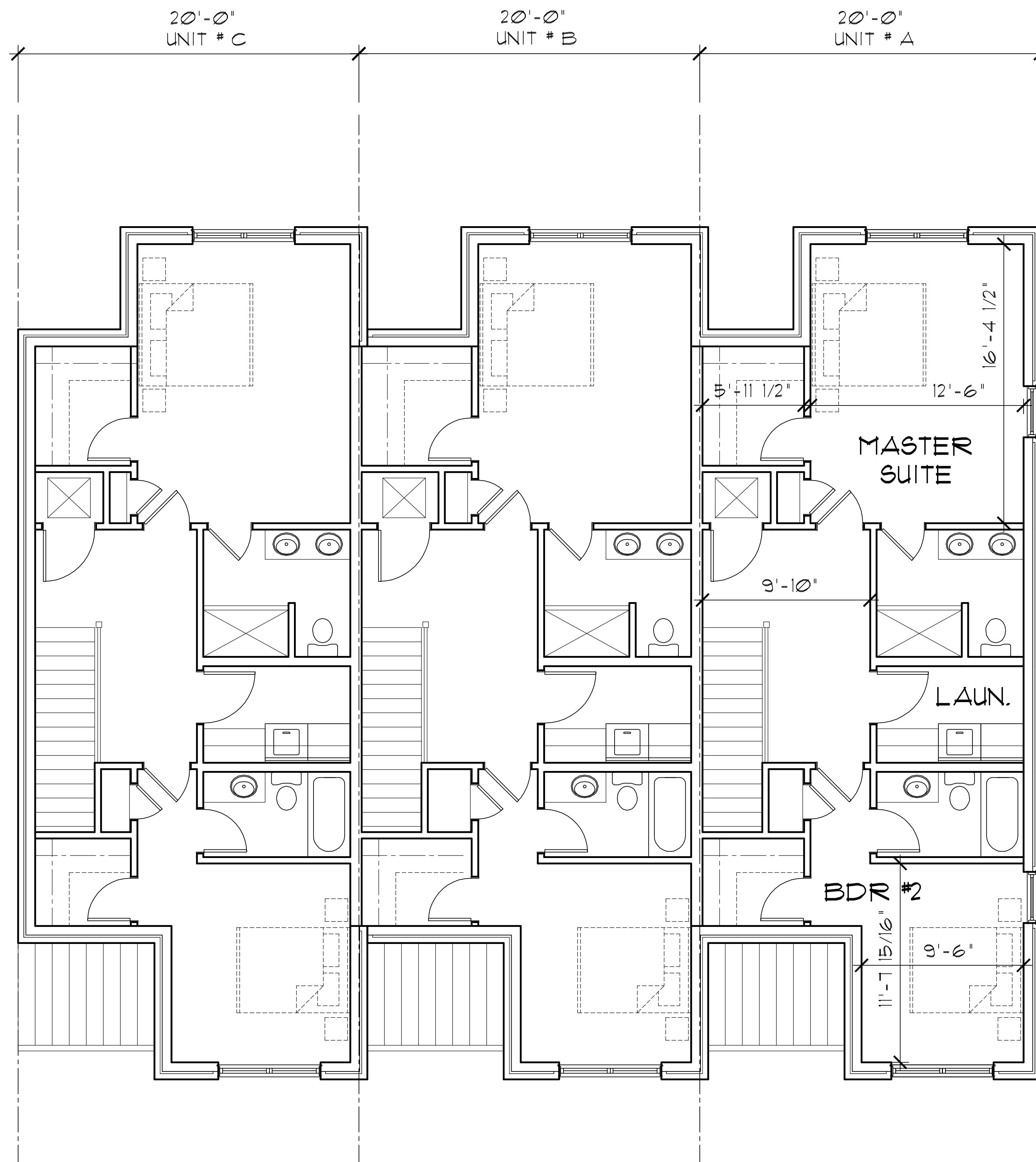
△	
△	
△	

PROJECT NO.

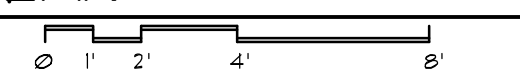
ISSUE DATE

PRELIMINARY

SHEET NO.

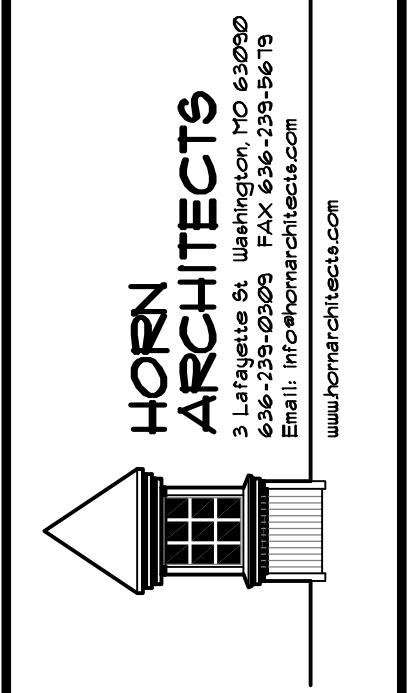


SCHEME "A"  
 SECOND FLOOR PLAN  
 Scale: 1/4" = 1'-0"



**PRELIMINARY**  
 NOT FOR CONSTRUCTION

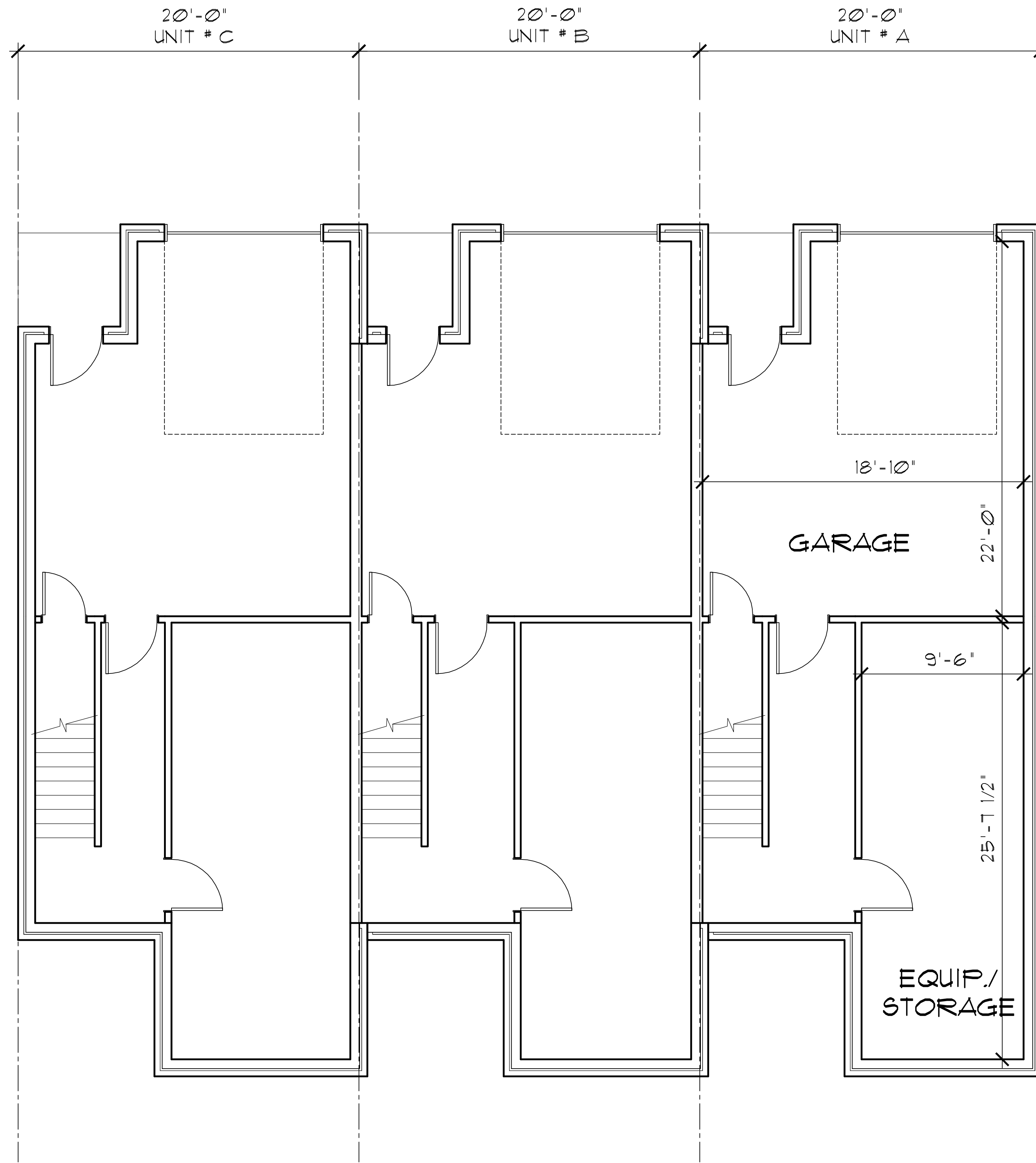
Kenneth R. Scheer #A-2007028208  
 H52 Architects, LLC #2013042889



New Three Unit Townhome for:  
**FRONT STREET DEVELOPMENT LLC**  
 Washington Missouri, 63090

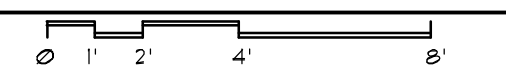
SHEET TITLE	
REVISIONS	
PROJECT NO.	
ISSUE DATE	PRELIMINARY
SHEET NO.	

**BUILDING "D"**



SCHEME 'A'  
BASEMENT FLOOR PLAN

Scale: 1/4" = 1'-0"



PRELIMINARY  
NOT FOR CONSTRUCTION

Kenneth R. Scheer #A-2007028208  
H52 Architects, LLC #2013042889



New Three Unit Townhome for:  
**FRONT STREET DEVELOPMENT LLC**  
Washington Missouri, 63090

SHEET TITLE

.

REVISIONS

△	
△	
△	

PROJECT NO.

..

ISSUE DATE

PRELIMINARY

SHEET NO.

.

BUILDING "D"